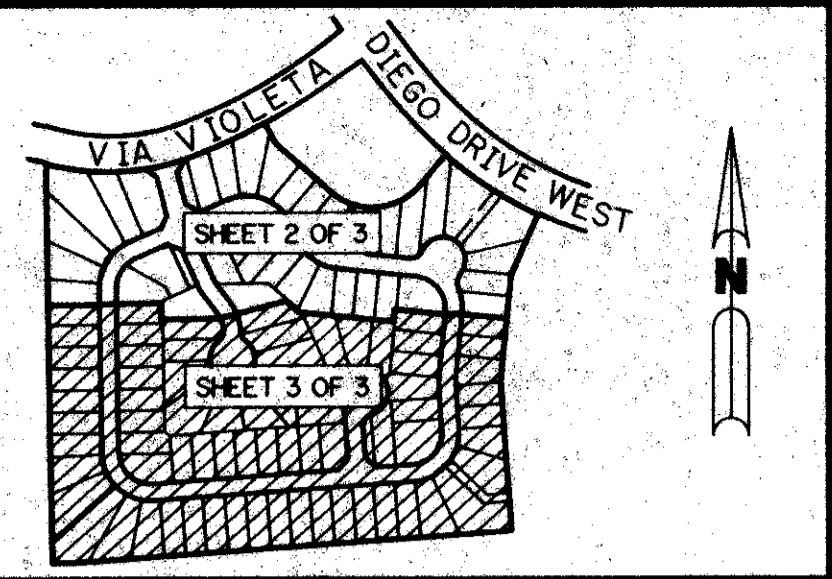


(A P.U.D.)

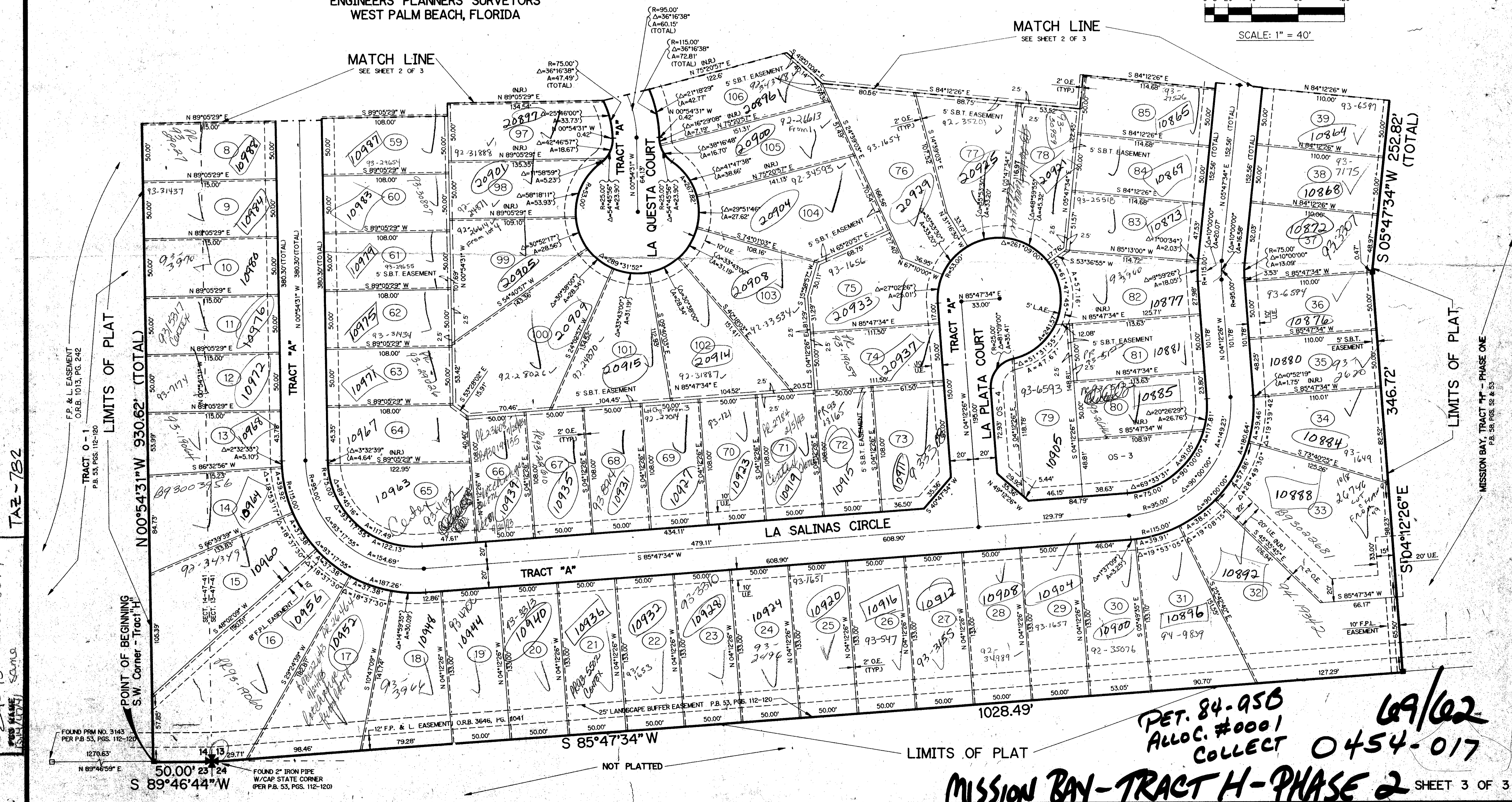
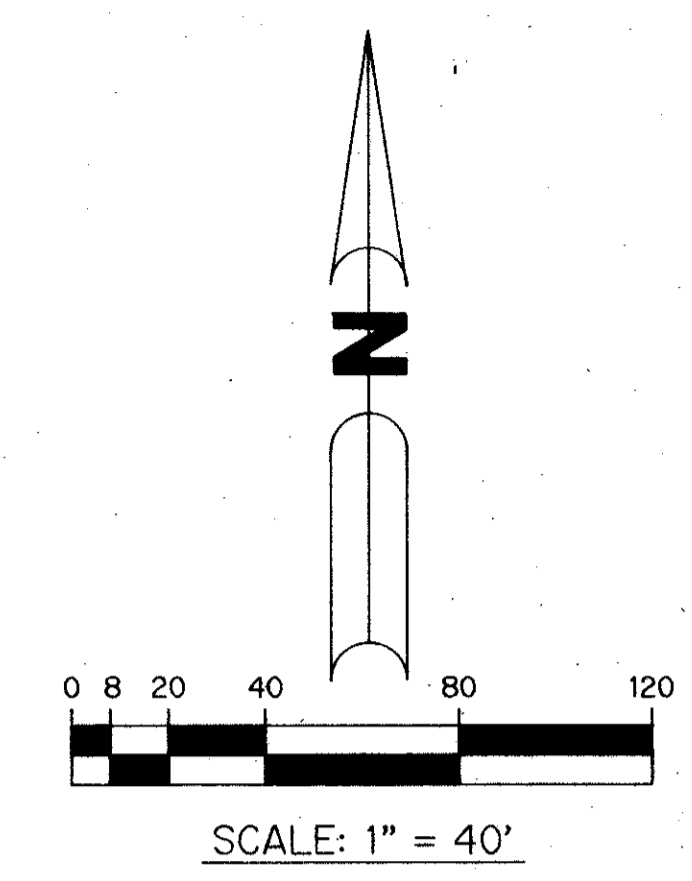
# MISSION BAY - TRACT H - PHASE TWO

A REPLAT OF A PORTION OF TRACT "H" ACCORDING TO THE PLAT OF MISSION BAY P.U.D. AS RECORDED IN PLAT BOOK 53, PAGES 112 THROUGH 120, INCLUSIVE, OF THE PUBLIC RECORDS OF PALM BEACH COUNTY, FLORIDA. SECTIONS 13 AND 14, TOWNSHIP 47 SOUTH, RANGE 41 EAST SHEET 3 OF 3 MARCH, 1992



KEY MAP  
N.T.S.

THIS INSTRUMENT PREPARED BY  
PERRY C. WHITE P.L.S. 4213 STATE OF FLORIDA  
LAWSON, NOBLE AND ASSOCIATES, INC.  
ENGINEERS PLANNERS SURVEYORS  
WEST PALM BEACH, FLORIDA



SUBDIVISION - MISSION BAY TRACT H - PHASE TWO  
BOOK 69 PAGE 62  
FLOOD ZONE B  
QUAD # 68  
SE 24-95  
ZONING RT  
ZIP CODE 33434  
SAMS

TAZ-7B2

PET. 84-95B  
ALLOC. #0001  
COLLECT 0454-017  
6/9/02

MISSION BAY - TRACT H - PHASE 2 SHEET 3 OF 3